

OFD Front bumper installation procedure.

Product Code: OFJLFBS014
OFJLFBS014AL
OFJLFBS014B
OFJLFBS014H

Fits to: Gladiator JT 20-present
Wrangler JL 2 Drzwi 18-present
Wrangler JL 4 Drzwi 18-present
Wrangler JL 4XE 21-present

Recommended tools:

Flat screwdrivers
Nr 1 Phillips screwdriver
Trim clip tool or small pry bar
Long needle pliers
Ratcheting wrench with sockets sets or similar



OFD
OFFROAD FABRICATION

Prepare a clean work surface. Remove packaging and use it as padding for the new bumper. This way you won't scratch it.

- Remove the license plate and put it aside.



- From the underside the of bumper, locate 6x trim clips and 2x fasteners that hold the plastic skid plate.



- Clips are a two-piece design. Using a pry bar or trim clips tool lift the inner piece about 1cm and then remove the whole clip. Some significant force is required here as this place gets quite dirty.



- Using an 8 mm socket wrench loosen and remove two remaining fasteners.



- Using a 7 mm socket wrench loosen and remove 7 fasteners holding inner plastic covers on both sides of the bumper.



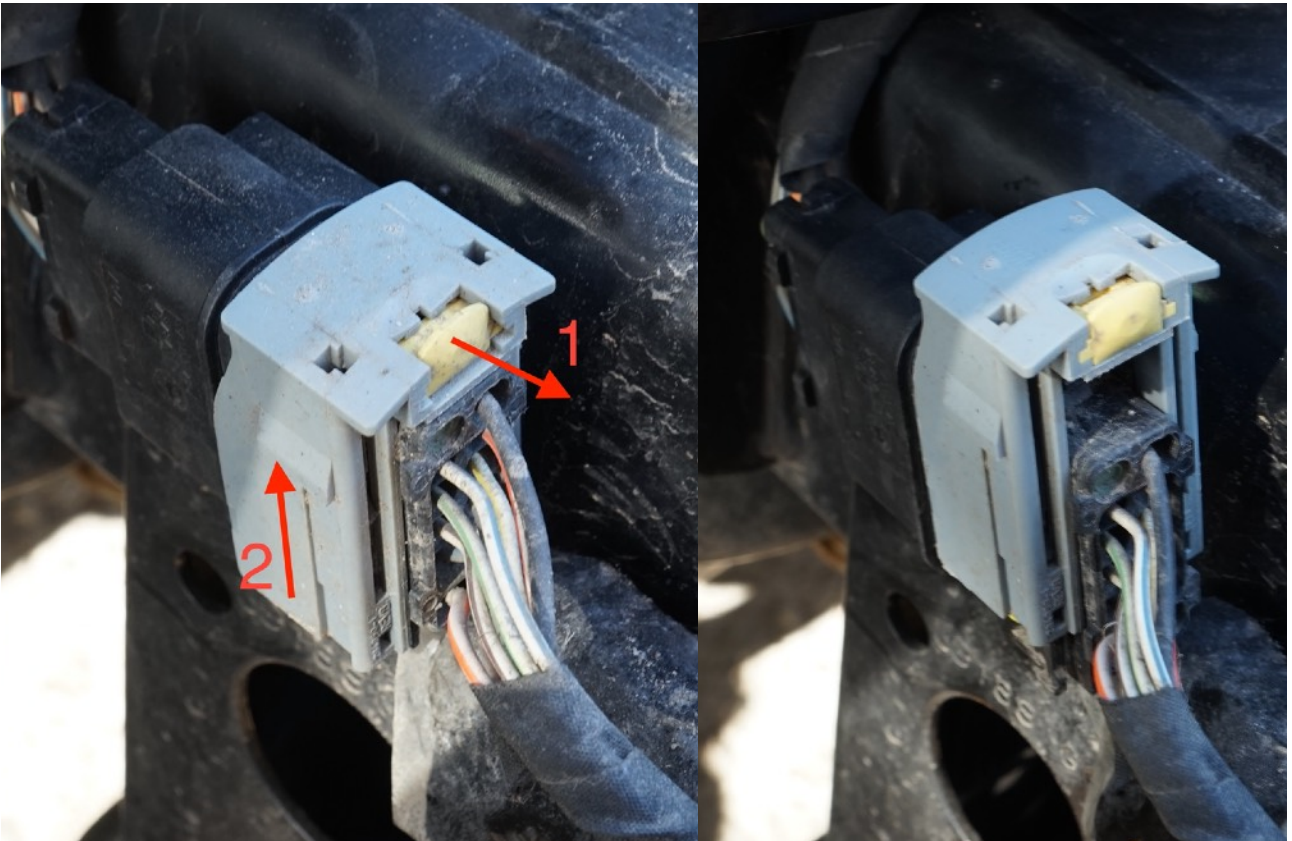
- Remove two clips holding the upper trim piece. Using a flat screwdriver lift and remove the inner piece (plug) and then remove the rest of the clip.



- The same trim piece is also held by white clips from inside the bumper. Release them by pinching them and pushing up. Use long needle nose pliers for best access. Gently pulling the masking bar upwards also helps in this task.



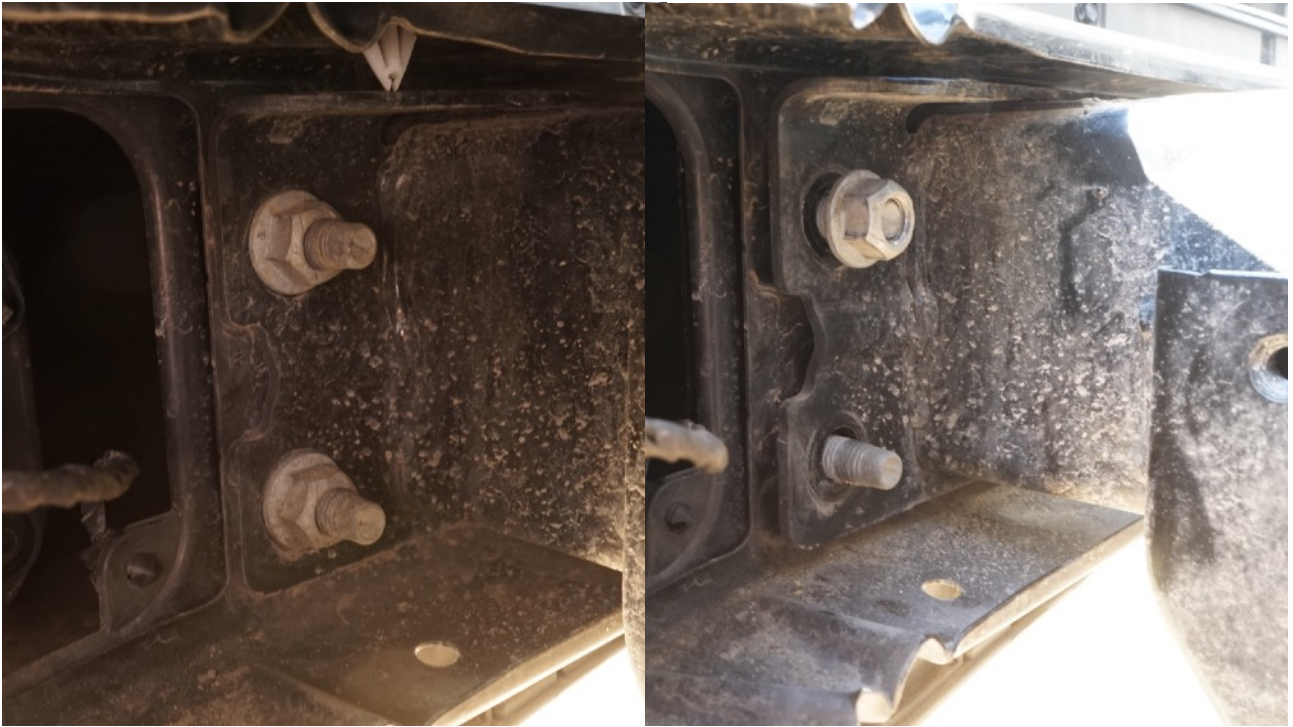
- Locate the connector behind the bumper (one side only). Slide the yellow security clip all the way out first then lift the grey plastic slider up.



- Holding both pieces of the connector pull them apart. Be careful not to damage any cables.



- Locate 4x main fasteners on each side of the frame, 8 overall. Using a deep socketed wrench remove the nuts. It's a good idea to leave one nut on each side slightly threaded just to hold the bumper secure on the frame.



- Remove all the remaining nuts holding the bumper to the frame and pull out the bumper. Keep it nice and straight to avoid it getting stuck. Most importantly pull it forward.



Place the old bumper on its „face”. Remove 8 fasteners holding the metal crash bar with 4 nuts on each side.



- Using a 7 mm socket undo all the fasteners holding inner and outer plastic bumper pieces.



- Move the plastic parts apart slightly to uncover the wire harness. Locate and remove all the zip ties. You can cut them off or save them by lifting the notch like we did and releasing the tie.



- On each parking sensor mounts release the two tabs marked by arrows and push the sensor with the finger from the outside of the bumper.



- Using an 8 mm socket disassemble the fog lights from the old bumper.



- The wiring harness, lights and sensors are now free of the old bumper. Inspect them for any wear and tear. Store somewhere safe as you will need them for a new bumper.

- Remove the front sway bar disconnect protective plate.



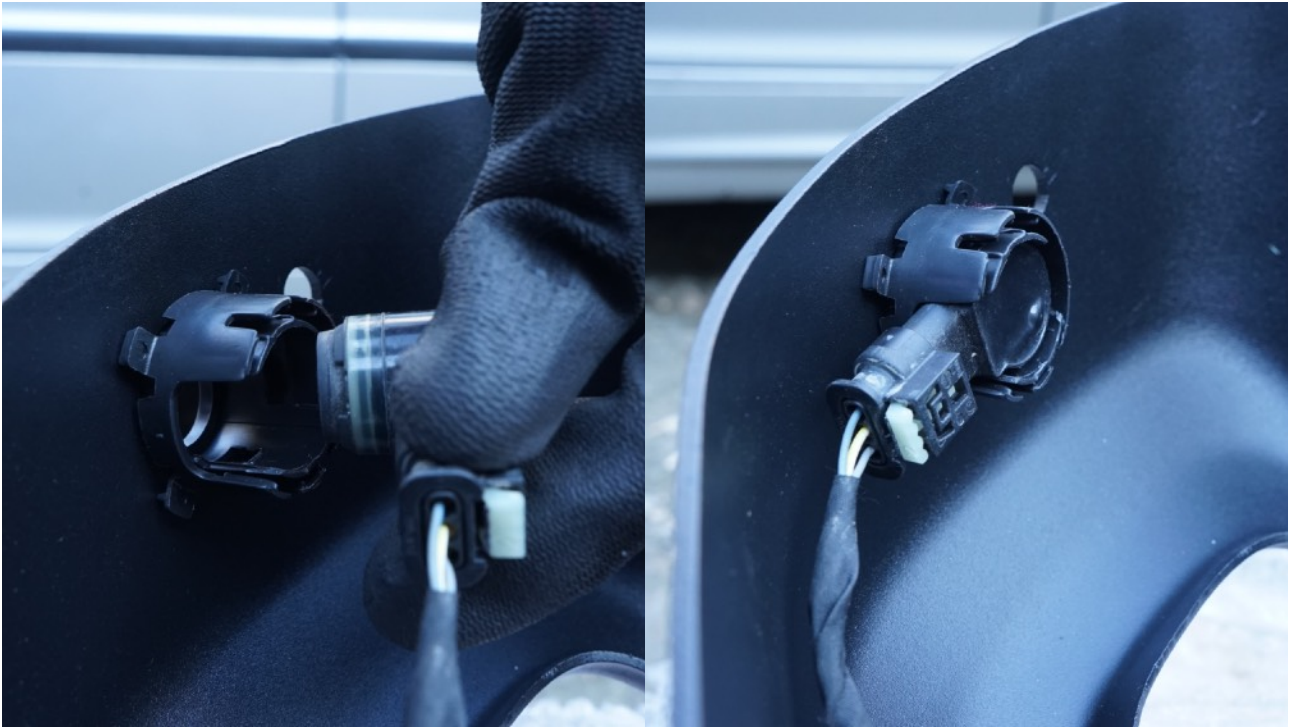
- This plate cannot be used again if you are planning on installing a winch plate to this bumper. We highly recommend steel (OFJLSP216) or alloy (OFJLSP216AL) skid plates from OFD to keep your sway bar protected.
- Place the new bumper on the clean surface. You can re-use the packaging to protect it.
- Remove 9 bolts holding back panels on each side.



- Install parking sensor adapters as shown. Make sure to match the shape of each adapter to the shape of the bumper. There are three different shapes.



- Lay the wiring harness on the bumper in the same direction as it was installed on the old bumper.
- Install two side parking sensors into the adapters. Leave the middle sensors hanging for now.



- Make sure the sensors are clean before installation. Check if the rubber seal sits evenly in the adapters.



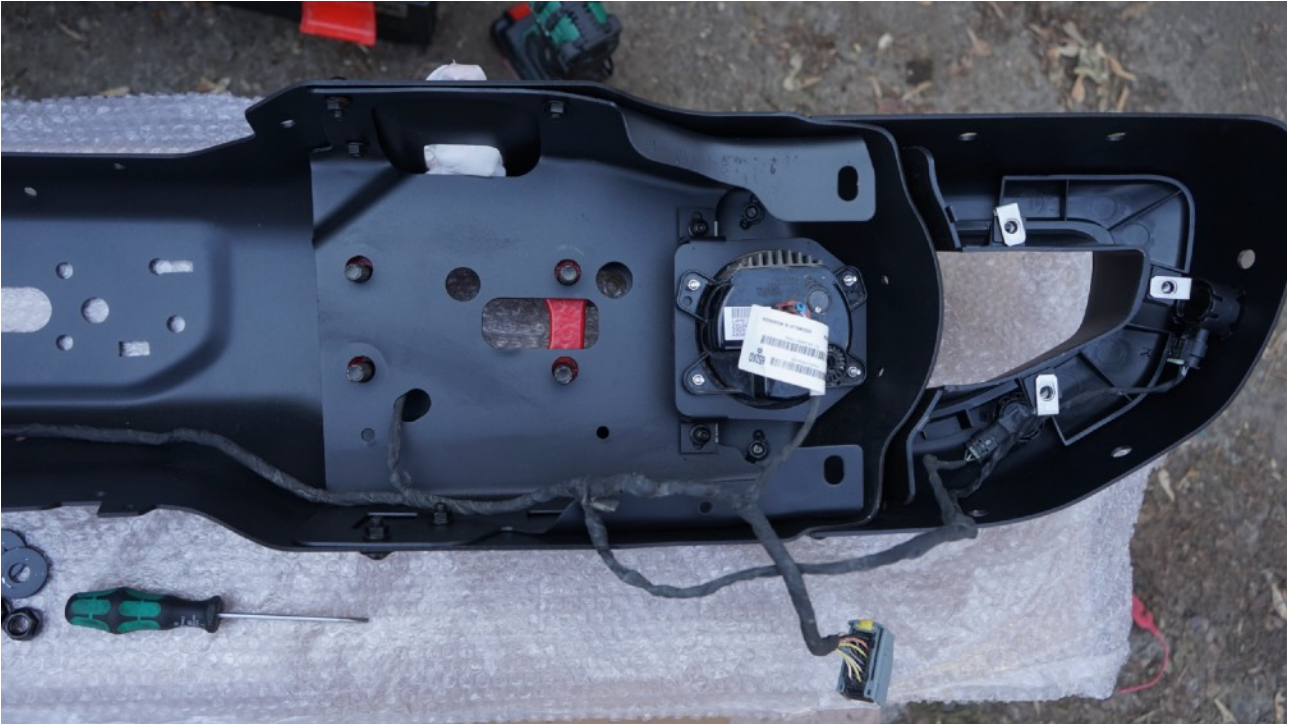
- Install fog lights into the adapters as shown.



- Install lights with brackets onto the bumper.
- Wire the harness as shown below.
- The third sensor wire must protrude thru the oval opening. You will have to disconnect the sensor from the harness. Reconnect it after this process.



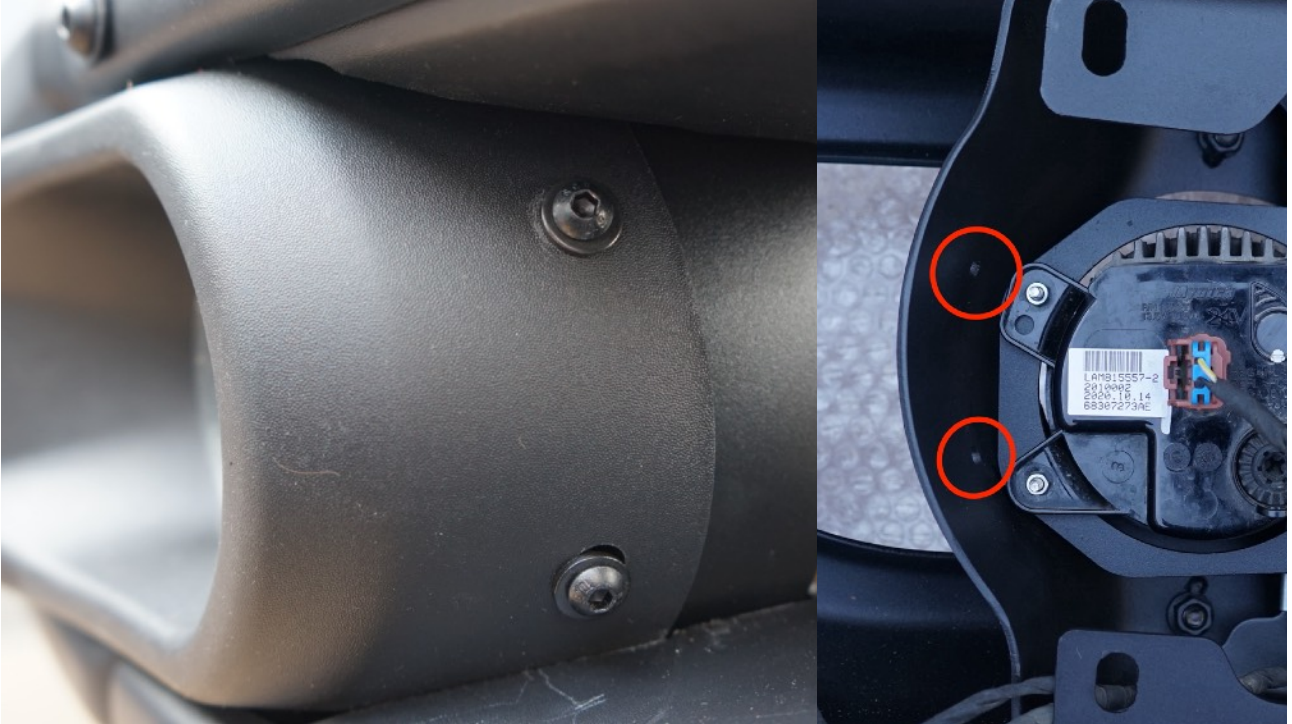
- Proceed with the wiring, lights and third sensor accordingly for both sides.
- Install plastic corners under the sensors, to ease the process you can turn the whole sensors slightly.



- Install the third sensor adapters and adapters onto the plastic caps as shown.



- Once you have fitted the caps into their place, secure them on the bumper with two bolts.



- Re-install corner back plates making sure you don't pinch any of the wires. The easiest way to achieve this is by firstly introducing all the bolts in the threads. Once you have them all in place finish the process and fully tighten all the bolts.



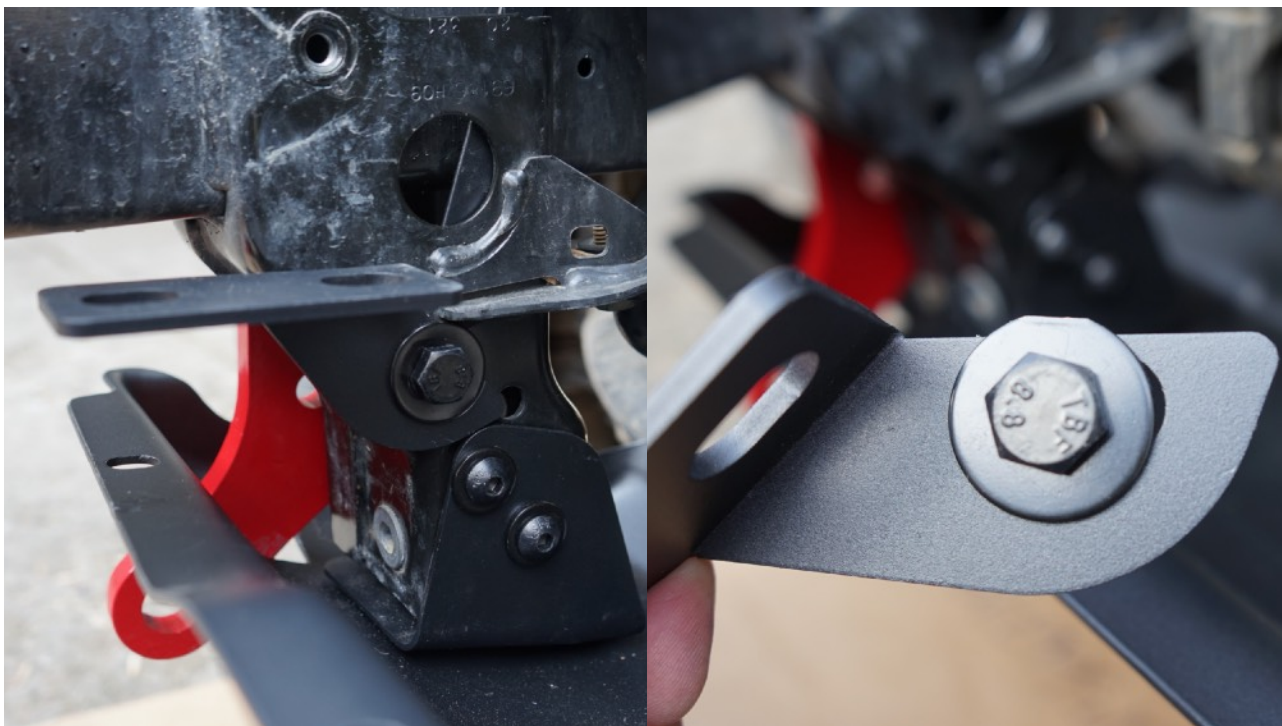
- At this point, the bumper is ready to be fitted to the frame but we highly recommend securing the wire harness inside so it won't be moving excessively when in motion.
- For the red hooks to be installed, introduce two nuts to the bottom side of the frame.



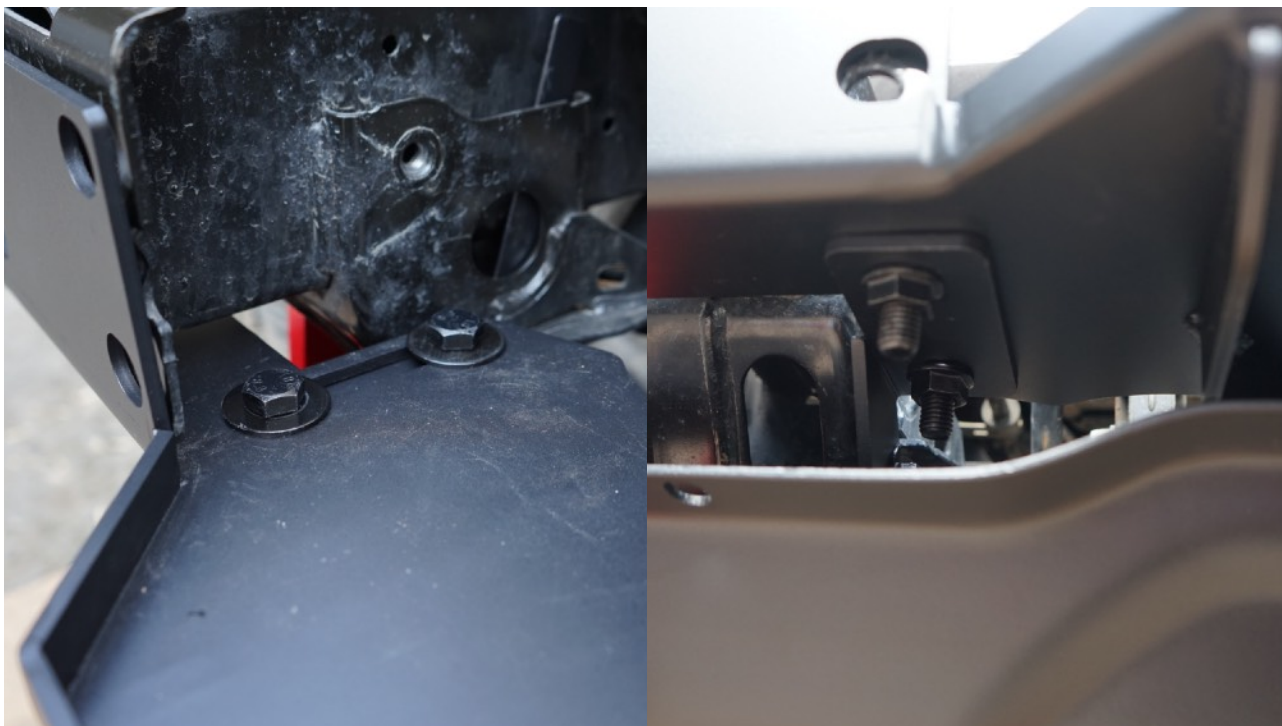
- Hold the nuts from above using long metal plates and introduce two bolts with washers as shown below.



- Install winch plate brackets using a similar method as above. Use the nut with a long plate. You can introduce it from the bottom or thru the large round hole in the frame.



- Install the winch plate and secure it with two bolts on each side. Until the bumper isn't installed the plate rest only on the brackets. If you need to install The winch make sure to support the winch plate or secure it to the frame temporarily.



- This is the best time for the winch install. Refer to your winch install manual. You can do it as well once the bumper installation is finished but the space around the winch plate might be just a little tight.
- For skid plate installation this is the best time to install the brackets only.
- Lift the bumper and introduce it to the openings in the frame and slide plate. Catch it with one nut on each side for safety. Make sure the bumper is level with the ground and then tighten the rest of the nuts evenly.



- Install provided clips on the top cover plate (5x) and the bottom of the bumper (5x).



- Below is only for situations when there is no winch installed.
- Place the top cover plate inside the bumper, under the opening, and secure it with the bolts.
- Fit the plastic cover bar on the frame.



- Secure the plastic cover bar with provided plugs.



- Connect the main connector behind the bumper. Make sure it is secured and does not move freely.



- This is a good time to fit the OFD skid plate. Use the clips on the bottom of the bumper and two frame brackets you have installed before. Refer to the skid plate instruction manual.
- Install plastic Cover for the fairlead opening if not installing the winch.
- Install license plate using provided mount.
- Turn the engine on. Check for the proper functioning of bumper parking sensors and fog lights.

CAUTION:

Longer exposure to weather conditions and sunlight might affect the shade of product paint. Paint scratches and chips are normal on all vehicle equipment. Paint damage can happen when off-roading but also during use on paved roads. It is the owner's duty to repaint and constantly maintain the good condition of the protective coat to prevent material corrosion.

Periodically check all the fasteners on all your accessories. We also recommend performing the check before every longer ride.

Each OFD product should be installed and checked for proper function by a trained and experienced professional. OFD is not responsible for any damage or harm caused by invalid installation.

Manufactured by
Asports Spółka z ograniczoną odpowiedzialnością
4 Józefa Marcika St.,
30-443 Kraków, Poland.
Made in China.